



# GAT MONTHLY MEMBERSHIP PROGRESS REPORT

Results as of: 3/31/2023

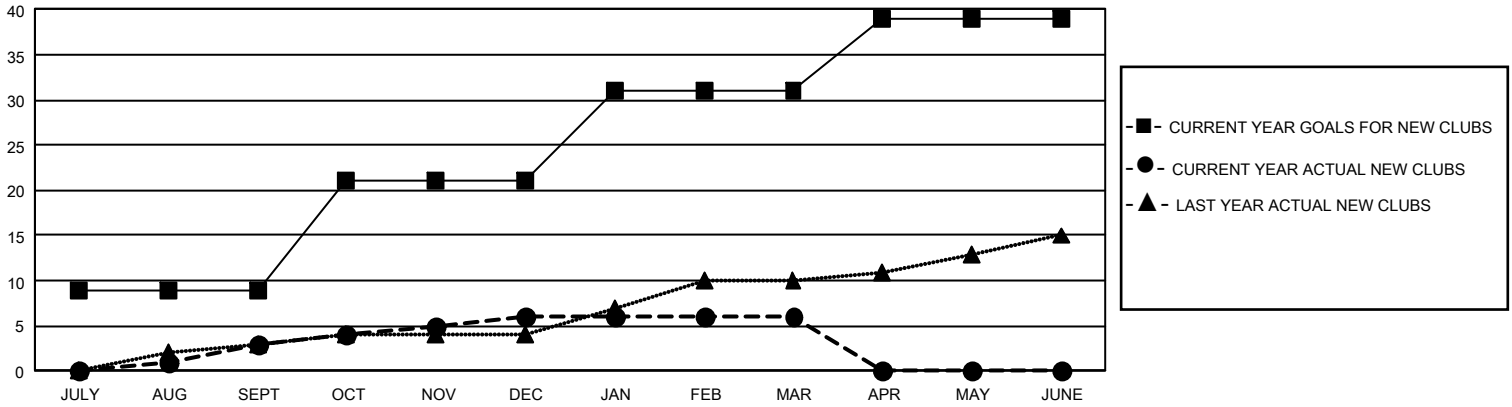
## GMT Constitutional Area 1, Group M

REPORT DOES NOT INCLUDE CLUBS IN UNDISTRICTED AREAS.

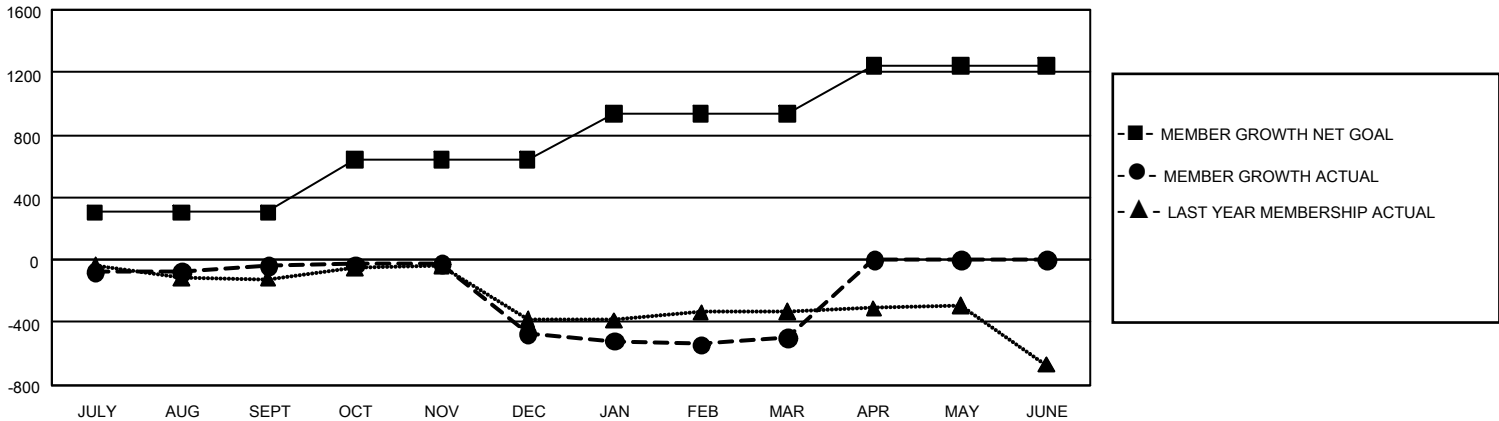
Clubs			
RESULTS FOR 2022-2023			
QUARTER	NEW CLUB GOAL	NEW CLUBS	DROPPED CLUBS
JULY/AUG/SEPT	27	3	7
OCT/NOV/DEC	36	3	18
JAN/FEB/MAR	30	0	7
APR/MAY/JUNE	24	0	0

Members			
RESULTS FOR 2022-2023			
QUARTER	MEMBER GROWTH NET GOAL	MEMBER GROWTH ACTUAL	DROPPED MEMBERS ACTUAL (including transfers)
JULY/AUG/SEPT	306	618	561
OCT/NOV/DEC	335	550	939
JAN/FEB/MAR	292	670	611
APR/MAY/JUNE	307	0	0

GOALS AND ACTUAL NEW CLUBS CUMULATIVE



GOALS AND ACTUAL MEMBERS CUMULATIVE



<b>DROPPED CLUBS: 32</b>	<b>388 CLUBS OF 792 ADDED 1 OR MORE NEW MEMBERS</b>	<b><u>GENDER DISTRIBUTION</u></b>	
		MALE 10,147 (60.71%) FEMALE 6,563 (39.26%) NON BINARY 1 (0.01%) PREFER NOT TO ANSWER 4 (0.02%)	
<b><u>DROPPED MEMBERS</u></b>		<b>TOTAL FAMILY UNIT MEMBERS 3,573</b>	
DECEASED 252 CLUB CANCELLED 250 OTHER 1,611 <b>TOTAL 2,113</b>	<a href="#">CLICK HERE FOR CUMULATIVE MEMBERSHIP DATA</a>	<b>FAMILY MEMBERS PAYING HALF DUES 1,834</b>	